



Clay Figurines in Context: Miniatures as Crucibles of Nile Valley Societies in the Second Millennium BC (Egypt and Nubia)

Organizing Committee:

G. Miniaci, M. Betrò, V. Forte, W. Grajetzki, D. Raue, A. Tooley, C. Alù, C. Saler, S. Thuault

Programme

Monday, 17 October

15.00–15.30 Welcome and opening of the conference – Prof. Marilina Betrò (Università di Pisa)

Clay Figurines before the II Millennium: A Comparative Glimpse

15.30–15.50 Elizabeth Brice (Macquarie University, Sydney), *One or Many? Exploring material and contextual variation in Predynastic Egyptian animal figurines*

15.50–16.00 Questions and discussion

16.00–16.20 Axelle Brémont-Bellini (Institut Français d'Archéologie Orientale, Cairo), *Even lumps of clay should not all be lumped together. Differences in context, shapes and use practices for bovine figurines in the Predynastic period*

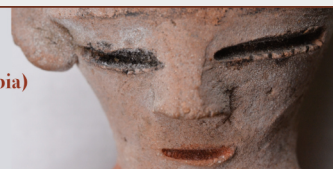
16.20–16.30 Questions and discussion

16.30–17.00 Coffee-break

17.00–17.20 Paul Whelan (University of Oxford), *A Canine Conundrum?* 17.20–17.30 Questions and discussion

17.30–17.50 Ulrike Dubiel (Freie Universität Berlin), *Images in clay - aspects of image production beyond the residence*

17.50–18.00 Questions and discussion



Tuesday, 18 October

Archaeological Contexts of Clay Figurines

9.00-9.20 Diana Craig Patch (Metropolitan Museum of Art, New York), *Mother and Child: An Unusual Pair of Figurines at The Met*

9.20-9.30 Questions and discussion

9.30-9.50 Victoria Jensen (University of California, Berkeley), *Figurines from the Palace, Settlement, and Cemeteries of Deir el-Ballas*

9.50-10.00 Questions and discussion

10.00-10.20 Clara Jeuthe (Deutsches Archäologisches Institut Kairo), *Figurines and Contexts in Ayn Asil/Balat*

10.20-10.30 Questions and discussion

10.30-11.30 Coffee-break

11.30-11.50 Wolfram Grajetzki (University of Pisa), *Clay/mud figures in burials of the Middle Kingdom and Second Intermediate Period*

11.50-12.00 Questions and discussion

Type and Variability of Figurines

12.00-12.20 Luisa María García González, Ana Díaz Blanco (University of Jaén), *A particular Middle Kingdom Pottery Figure Vessel from Tomb QH35p of Qubbet el-Hawa (Aswan, Egypt)*

12.20-12.30 Questions and discussion

12.30-12.50 Anna Uhlschmidt (Universität Leipzig), *Grazing on the Horizon - Aniba animal figurines and the range of research*

12.50-13.00 Questions and discussion

13.00-14.30 Lunch break

14.30-14.50 Jenny Butterworth (Wake Technical Community College in Raleigh, North Carolina), *Lower Nubian C-Group Figurines: Defining the Anthropomorphic Corpus*

14.50-15.00 Questions and discussion

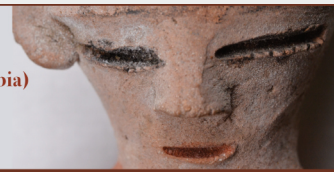
15.00-15.20 Andrés Martín García de la Cruz (Leiden University, Institute for Area Studies & Netherlands Institute for the Near East), *Middle Kingdom Clay Figurines in the Batn el-Hagar chain of fortresses*

15.20-15.30 Questions and discussion

15.30-15.50 Filippo Mi (University of Strasbourg), *Is anyone home? Examining evidence of human figurines in Middle Kingdom architectural models*

15.50-16.00 Questions and discussion

16.00-16.30 Coffee-break



Raw Material Analysis and Manufacture Technique

16.30-16.50 Athena Van der Perre, Dennis Braeckmans, Vanessa Boschloos & Hendrik Hameeuw (KU Leuven-Leiden University-Ghent University), *From typology to chemical clusters: a multifocal study of the Saqqara Execration figurines' object lives*

16.50-17.00 Questions and discussion

17.00-17.20 Paulina Wandowicz (University College London), *Broken pieces: a practice-focused approach to ceramic female figurines in Middle to New Kingdom Egypt*

17.20-17.30 Questions and discussion

17.30-17.50 Vanessa Forte (University of Pisa-University of Padua), *Tracing the makers: insights from the case study of the Middle Kingdom clay figurines of Lahun (MBA, c. 1800-1700 BC)*

17.50-18.00 Questions and discussion

Wednesday, 19 October

Beyond the Bronze Age Figurines: Between Continuity and Change

9.00-9.20 Kathrin Gabler, Martina Landrino (University of Basel/University of Copenhagen-University of Leipzig), *Mud Made for Eternity. Two Life-Size Muna-Statues from TT 217*

9.20-9.30 Questions and discussion

9.30-9.50 Patryk Chudzik (University of Warsaw), *Contextualising the Hathor cult. Some remarks on the clay cow figurines from Deir el-Bahari*

9.50-10.00 Questions and discussion

10.00-10.20 Rennan Lemos (University of Cambridge), *Identity moulded in clay? A group of unusual shabtis from Aniba and the local production of mortuary goods in New Kingdom Nubia*

10.20-10.30 Questions and discussion

10.30-11.00 Coffee-break

11.00-11.20 Massimo Cultraro (National Research Council, Institute of Heritage Sciences, Catania), *Aegean-Mycenaean clay figurines in Late Bronze Age Egypt: context and ritual implications*

11.20-11.30 Questions and discussion

Closing Remarks

11.30-11.50 Gianluca Miniaci (University of Pisa), *Clay Figurines at Lahun: A World inside other Worlds*

11.50-12.00 Questions and discussion

12.00-13.00 Final round table